

AED TRAINER

ATM-112



Product Introduction

The ATM-112 AED Trainer is designed to effectively train emergency responder in the use of an Automatic External Defibrillator(AED). This training unit provides a variety of pre-programmed scenarios to help responders become familiar with an AED and allow them to demonstrate the basic skills necessary to use an AED in an emergency.

ATM-112 AED trainer provides simulated shock delivery, to ensure safety during training, it has no high voltage capabilities, and cannot deliver a shock.

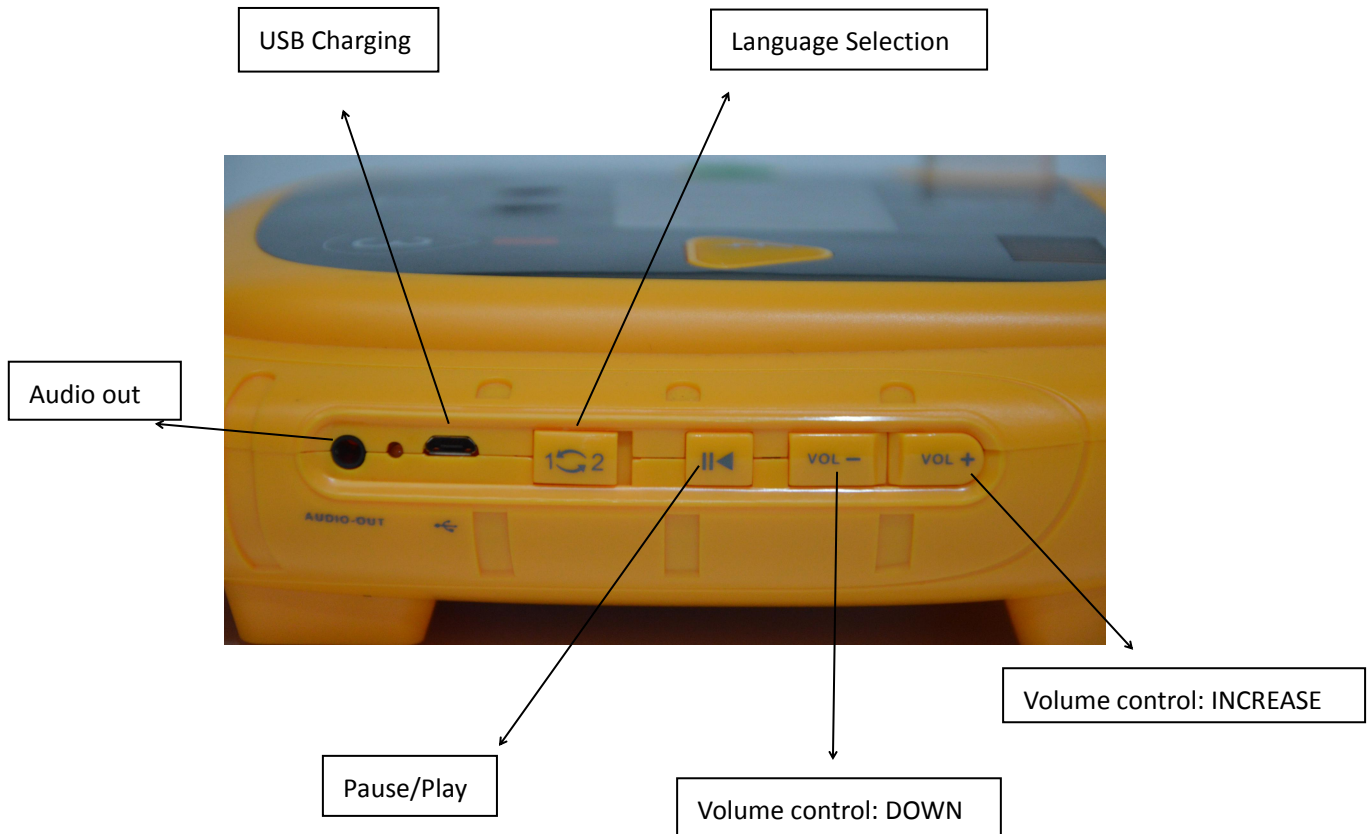
NOTE: Before using a real clinical AED, the responder should have completed an appropriate responder training program. Having completed such a course, they should demonstrate a proficiency in performing Basic Life Support skills; and knowledge of applicable medical protocols and procedures.

Overview

Product Contents:

Main body, Remote Control, Training pads(Adult use 1pair. Pediatric use 1pair), Wire Connectors, instruction Manual, Storage Bag, Adapter.





AED Trainer Main body

1. ON/OFF Button

Turn unit on and initiate voice prompts. Press once to turn on. Press again to turn off.

2. Pads Connector Socket

Insert the training pads connector into the pads connector socket. Both the flashing indicator light and the LCD screen indicate the socket location.

3. Volume Control

Control the voice prompt volume during use.

4. Shock button

Activate simulated shock delivery. The button&LCD screen flashes when the unit is ready to deliver a simulated shock.

5. USB Charging

Please use the ATM-112 AED Trainer certified adapter to charge the built-in Lithium Polymer Battery (3.7V /4000mAh).

(Note: Don't use the Trainer unit while adapter is connected)


6. Audio Out

All external speakers can be connected to the AED Trainer.


1. PRE-CONNECT ACTIVATE KEY

Teach students how to paste the electrodes and the cable. Simulate this process.
This is Fully Auto play.


2. SIMULATE GOOD ELECTRODES CONNECTION

During the training, if this button is pressed, "" will be displayed on the LCD screen. It simulates good electrodes connection. The user can choose related scenarios to practice.


3. SIMULATE LOOSE ELECTRODES CONNECTION

During the training, if the button is pressed, "" will be displayed on the LCD screen. It simulates loose electrodes connection. The user can choose related scenarios to practice.


4. SIMULATE MOTION ARTIFACT

During the training, if this button is pressed, "" will be displayed on the LCD screen.


5. SIMULATE A SHOCKABLE RHYTHM

During the training, if this button is pressed, "" will be displayed on the LCD screen. It simulates a shockable rhythm. The user can choose related scenarios to practice.


6. SIMULATE A NON-SHOCKABLE RHYTHM

During the training, if this button is pressed, "" will be displayed on the LCD screen. It simulates a non-shockable rhythm. The user can choose related scenarios to practice.

7. LOW BATTERY

During the training, if this button is pressed, "" will be displayed on the LCD screen. A voice prompts "low battery", and then the current scenario is continued.

8. ERROR BUTTON

During the training, if this button is pressed, it gives "tick" sound, and "" will be displayed on the LCD screen, the voice prompts are stopped, the "tick" sound is given again after 10 seconds and will be continue until the AED trainer is turned off.

9. PAUSE / PLAY

During the training, push the button will be stopped, push again will resumed.

10. SCENARIO SELECTION

Select scenarios by numbers.

11. SCENARIOS SELECTION / UP & DOWN

When either of these buttons are pressed, the display prompts a change in scenario selection.

Specification and Product Content

Model No.: ATM-112

Name: AED Trainer

Power Supply: DC 3.7V / Lithium Polymer Battery 4000mAh

Maximum Current:<300mA

Product Size: 260x230x50mm

Remote Control

Power Supply: 2xAAA battery

Static Current:<5 μ A

Maximum Current:<10mA

Product Contents



No.	Contents	Quantity	Unit	Remark
1	Main body	1	PC	
2	Remote control	1	PC	
3	Wire connector	1	PC	
4	Adult Pads	1	Pair	These pads can be used repeatedly

5	Child Pads	1	Pair	These pads can be used repeatedly
6	Instruction Manual	1	PC	
7	Storage bag	1	PC	EVA bag
8	Adapter	1	PC	USB socket

Training pads



Note: The training pads are for training use only and will not function with an actual clinical AED.

Operating Instruction

First, turn on the trainer and select a training scenario

Turn on the unit, then press the scenario selection button to select a preprogrammed training scenario, the operating scenario is displayed in the LCD display window.

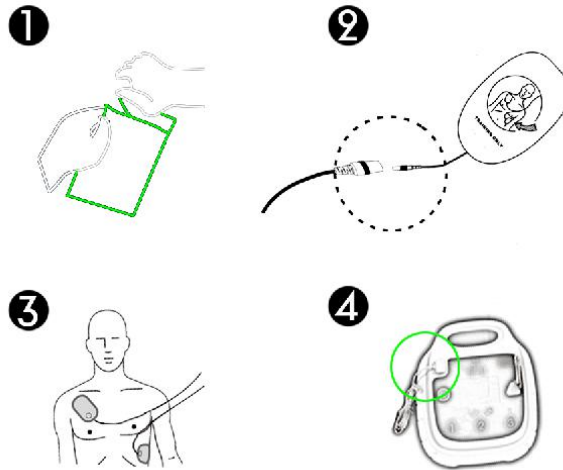
Note: The last setting will be stored and maintained even if the unit has been turned off.

Second, connect pads

- A. Take out the training pads
- B. Connect the wire with training pads.
- C. Place pads on the chest in the position shown on the pad diagrams.
- D. When prompted, plug the connector to the AED trainer using the socket with a flashing Green light indicator (also a display about the socket location on the full colour screen to remind).

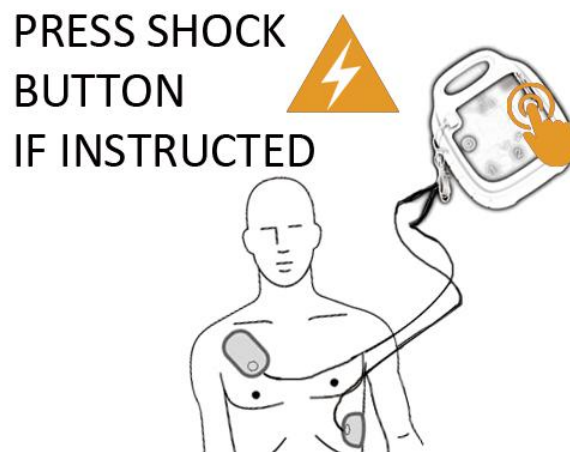
Note:

- Don't bend or stretch wires excessively.
- Please hold the pad connector when pulling it out of the trainer.



Third, follow the voice prompts

According to the selected scenario, operate the trainer by following the voice prompts.



Storage Guidance

Pad Maintenance

- Keep the Gel side of pads clean and free of dust.
- After use, please stick pads with their original cover.
- If the stickiness of pads declines, users can try washing the pads with water for a few seconds, and then leaving to dry thoroughly.
- Don't wipe the Gel side of pads with paper and cloth.
- Don't scrape the Gel side of pads with nail and brush.
- The pads should last for several training sessions.
- Don't wash pads frequently, and don't use detergent and hot water.
- Don't store pads in places subjected to direct sunlight, high temperature or humidity.

Main Body Maintenance

- Wipe clean the main body routinely.
- After shutting off power, make sure to pull out the pad connector from the main body.

- If the main body is dirty, use a soft damp cloth with water or neutral detergent and wipe softly. If necessary, clean or sterilize it with a cloth soaked in medical alcohol (75% concentration max).
- Do not use abrasive cleaning substances.
- Use only samp non-abrasive cloth for cleaning. Do not soak the AED training unit with any fluid.

Storage Precautions

- Do not store near spirits or gasoline.
- Do not store in locations subjected to direct sunlight, high temperature, moisture, dust or corrosive gas.
- Store the main body, electrode pads, wire leads and instruction manual in the bag provided.

* Failure to comply with the above instruction may void the warranty.

Pre-programmed Scenarios 1-10

Scenarios	Description	Operation
1	Defibrillation pads- With single-shock conversion	<ul style="list-style-type: none"> ● Apply pads(pause) ● Pads on ● Shockable rhythm ● 1 shock ● CPR ● Non-shockable rhythm ● CPR (then repeats)
2	Ventricular Fibrillation- multiple shocks required	<ul style="list-style-type: none"> ● Shockable rhythm ● 4 shocks ● CPR between shocks ● Non-shockable rhythm ● CPR (then repeats)
3	Ventricular Fibrillation- With single-shock conversion	<ul style="list-style-type: none"> ● Shockable rhythm ● 1 shock ● CPR ● Non-shockable rhythm ● CPR (then repeats)
4	Ventricular Fibrillation- two shocks required	<ul style="list-style-type: none"> ● Shockable rhythm ● 2 shocks ● CPR between shocks ● Non-shockable rhythm ● CPR (then repeats)
5	Non-shockable Rhythm	<ul style="list-style-type: none"> ● Non-shockable rhythm throughout ● CPR (then repeats)
6	Ventricular Fibrillation- With 2 shocks required for conversion	<ul style="list-style-type: none"> ● Shockable rhythm ● 2 shocks ● CPR between shocks ● Non-shockable rhythm ● CPR (Then the scenario restarts)

7	Ventricular Fibrillation- With 3 shocks required for conversion	<ul style="list-style-type: none"> ● Shockable rhythm ● 3 shocks ● CPR between shocks ● Non-shockable rhythm ● CPR (then repeats)
8	Troubleshooting Skills- Defibrillation pads with two shocks required for conversion	<ul style="list-style-type: none"> ● Poor pads connection ● Shockable rhythm ● 2 shocks ● CPR between shocks ● Non-shockable rhythm ● CPR (then repeats)
9	Ventricular Fibrillation	<ul style="list-style-type: none"> ● Shockable rhythm ● 1 shock ● CPR ● Non-shockable rhythm ● CPR <p>(Then the scenario restarts)</p>
10	Troubleshooting Skills- Motion, low battery	<ul style="list-style-type: none"> ● Detect motion ● Shockable rhythm ● 1 shock ● CPR ● Low battery ● Non-shockable rhythm ● CPR (then repeats)

Scenario 1:

Press pads firmly to patient's bare chest --Stop10S--

(Pause status) then If need continue, press pads on button on remote control.

Analyzing heart rhythm --Stop2S--

Do not touch the patient --Stop5S--

Shock advised --Stop2S--

Charging --Stop2S--

Stay clear of patient --Stop2S--

Deliver shock now, press the orange button

(The shock light flashes, the speaker has an alarm sound and press shock button.)

(If shock button is pressed, then the voice will prompt:

Shock delivered --Stop2S--

Begin CPR.

--Stop 2MIN--

Analyzing heart rhythm --Stop2S--

Do not touch the patient --Stop5S--

Analyzing heart rhythm --Stop2S--

No shock advised --Stop2S--

Begin CPR.

--Stop 2MIN--

(Circulation)

(If shock button not pressed, the voice prompts: --Stop6S--
Deliver shock now, press the orange button --Stop6S--
Deliver shock now, press the orange button --Stop6S--
Shock button not pressed. --Stop2S--
Begin CPR.
--Stop 2MIN--

(Then the scenario restarts).

(But Press pads firmly to patient's bare chest. won't play.)

Scenario 2:

Analyzing heart rhythm --Stop2S--
Do not touch the patient --Stop5S--
Shock advised --Stop2S--
Charging --Stop2S--
Stay clear of patient --Stop2S--

Deliver shock now, press the orange button

(The shock light flashes, the speaker has an alarm sound and press shock button.)

(If shock button is pressed, then the voice will prompt:

Shock delivered --Stop2S--
Begin CPR.
--Stop 2MIN--

Analyzing heart rhythm --Stop2S--
Do not touch the patient --Stop5S--
Shock advised --Stop2S--
Charging --Stop2S--
Stay clear of patient --Stop2S--

Deliver shock now, press the orange button

(The shock light flashes, the speaker has an alarm sound and press shock button.)

(If shock button is pressed, then the voice will prompt:

Shock delivered --Stop2S--
Begin CPR.
--Stop 2MIN--

Analyzing heart rhythm --Stop2S--
Do not touch the patient --Stop5S--
Shock advised --Stop2S--
Charging --Stop2S--
Stay clear of patient --Stop2S--

Deliver shock now, press the orange button

(The shock light flashes, the speaker has an alarm sound and press shock button.)

(If shock button is pressed, then the voice will prompt:

Shock delivered --Stop2S--

Begin CPR.

--Stop 2MIN--

Analyzing heart rhythm --Stop2S--

Do not touch the patient --Stop5S--

Shock advised --Stop2S--

Charging --Stop2S--

Stay clear of patient --Stop2S--

Deliver shock now, press the orange button

(The shock light flashes, the speaker has an alarm sound and press shock button.)

(If shock button is pressed, then the voice will prompt:

Shock delivered --Stop2S--

Begin CPR.

--Stop 2MIN--

Analyzing heart rhythm --Stop2S--

Do not touch the patient --Stop5S--

Analyzing heart rhythm --Stop2S--

No shock advised --Stop2S--

Begin CPR.

--Stop 2MIN--

(Circulation)

(If shock button not pressed, the voice prompts: --Stop6S--

Deliver shock now, press the orange button --Stop6S--

Deliver shock now, press the orange button --Stop6S--

Shock button not pressed. --Stop2S--

Begin CPR.)

--Stop2MIN--

(Then the scenario restarts).

Scenario 3:

Analyzing heart rhythm --Stop2S--

Do not touch the patient --Stop5S--

Shock advised --Stop2S--

Charging --Stop2S--

Stay clear of patient --Stop2S--

Deliver shock now, press the orange button

(The shock light flashes, the speaker has an alarm sound and press shock button.)

(If shock button is pressed, then the voice will prompt:

Shock delivered --Stop2S--

Begin CPR.
--Stop 2MIN--

Analyzing heart rhythm --Stop2S--

Do not touch the patient --Stop5S--

Analyzing heart rhythm --Stop2S--

No shock advised --Stop2S--

Begin CPR.

--Stop 2MIN--

(Circulation)

(If shock button not pressed, the voice prompts: --Stop6S--

Deliver shock now, press the orange button -Stop6S--

Deliver shock now, press the orange button --Stop6S--

Shock button not pressed. --Stop2S--

Begin CPR.

--Stop 2MIN--

(Then the scenario restarts).

Scenario 4:

Analyzing heart rhythm --Stop2S--

Do not touch the patient --Stop5S--

Shock advised --Stop2S--

Charging --Stop2S--

Stay clear of patient --Stop2S--

Deliver shock now, press the orange button

(The shock light flashes, the speaker has an alarm sound and press shock button.)

(If shock button is pressed, then the voice will prompt:

Shock delivered --Stop2S--

Begin CPR.

--Stop2 MIN--

Analyzing heart rhythm --Stop2S--

Do not touch the patient --Stop5S--

Shock advised --Stop2S--

Charging --Stop2S--

Stay clear of patient --Stop2S--

Deliver shock now, press the orange button

(The shock light flashes, the speaker has an alarm sound and press shock button.)

(If shock button is pressed, then the voice will prompt:

Shock delivered --Stop2S--

Begin CPR.

--Stop 2MIN--

Analyzing heart rhythm --Stop2S--

Do not touch the patient --Stop5S--

Analyzing heart rhythm --Stop2S--

No shock advised --Stop2S--

Begin CPR.

--Stop 2MIN--

(Circulation)

(If shock button not pressed, the voice prompts: --Stop6S--

Deliver shock now, press the orange button --Stop6S--

Deliver shock now, press the orange button --Stop6S--

Shock button not pressed. --Stop2S--

Begin CPR.

--Stop 2MIN--

(Then the scenario restarts).

Scenario 5:

Analyzing heart rhythm --Stop2S--

Do not touch the patient --Stop5S--

Analyzing heart rhythm --Stop2S--

No shock advised --Stop2S--

Begin CPR.

--Stop 2MIN--

(Circulation)

Scenario 6:

Analyzing heart rhythm --Stop2S--

Do not touch the patient --Stop5S--

Shock advised --Stop2S--

Charging --Stop2S--

Stay clear of patient --Stop2S--

Deliver shock now, press the orange button

(The shock light flashes, the speaker has an alarm sound and press shock button.)

(If shock button is pressed, then the voice will prompt:

Shock delivered --Stop2S--

Begin CPR.

--Stop 2MIN--

Analyzing heart rhythm --Stop2S--

Do not touch the patient --Stop5S--

Shock advised --Stop2S--

Charging --Stop2S--

Stay clear of patient --Stop2S--

Deliver shock now, press the orange button

(The shock light flashes, the speaker has an alarm sound and press shock button.)

(If shock button is pressed, then the voice will prompt:

Shock delivered --Stop2S--

Begin CPR.

--Stop 2MIN--

Analyzing heart rhythm --Stop2S--

Do not touch the patient --Stop5S--

Analyzing heart rhythm --Stop2S--

No shock advised --Stop2S--

Begin CPR.

--Stop 2MIN--

(Then the scenario restarts).

(If shock button not pressed, the voice prompts: --Stop6S--

Deliver shock now, press the orange button --Stop6S--

Deliver shock now, press the orange button --Stop6S--

Shock button not pressed. --Stop2S--

Begin CPR.

--Stop 2MIN--

(Then the scenario restarts).

Scenario 7:

Analyzing heart rhythm --Stop2S--

Do not touch the patient --Stop5S--

Shock advised --Stop2S--

Charging --Stop2S--

Stay clear of patient --Stop2S--

Deliver shock now, press the orange button

(The shock light flashes, the speaker has an alarm sound and press shock button.)

(If shock button is pressed, then the voice will prompt:

Shock delivered --Stop2S--

Begin CPR.

--Stop 2MIN--

Analyzing heart rhythm --Stop2S--

Do not touch the patient --Stop5S--

Shock advised --Stop2S--

Charging --Stop2S--

Stay clear of patient --Stop2S--

Deliver shock now, press the orange button

(The shock light flashes, the speaker has an alarm sound and press shock button.)

(If shock button is pressed, then the voice will prompt:

Shock delivered --Stop2S--

Begin CPR.

--Stop 2MIN--

Analyzing heart rhythm --Stop2S--

Do not touch the patient --Stop5S--

Shock advised --Stop2S--

Charging --Stop2S--

Stay clear of patient --Stop2S--

Deliver shock now, press the orange button

(The shock light flashes, the speaker has an alarm sound and press shock button.)

(If shock button is pressed, then the voice will prompt:

Shock delivered --Stop2S--

Begin CPR.

--Stop 2MIN--

Analyzing heart rhythm --Stop2S--

Do not touch the patient --Stop6S--

Analyzing heart rhythm --Stop2S--

No shock advised --Stop2S--

Begin CPR.

--Stop 2MIN--

(Circulation)

(If shock button not pressed, the voice prompts: --Stop6S--

Deliver shock now, press the orange button --Stop6S--

Deliver shock now, press the orange button --Stop6S--

Shock button not pressed. --Stop2S--

Begin CPR.

--Stop 2MIN--

(Then the scenario restarts).

Scenario 8:

Analyzing heart rhythm --Stop2S--

Do not touch the patient --Stop 0.1S --

Press pads firmly to patient's bare chest --Stop10S--

Analyzing heart rhythm --Stop2S--

Do not touch the patient --Stop5S--

Shock advised --Stop2S--

Charging --Stop2S--

Stay clear of patient --Stop2S--

Deliver shock now, press the orange button

(The shock light flashes, the speaker has an alarm sound and press shock button.)

(If shock button is pressed, then the voice will prompt:

Shock delivered --Stop2S--

Begin CPR.

--Stop 2MIN--

Analyzing heart rhythm --Stop2S--

Do not touch the patient --Stop5S--

Shock advised --Stop2S--

Charging --Stop2S--

Stay clear of patient --Stop2S--

Deliver shock now, press the orange button

(The shock light flashes, the speaker has an alarm sound and press shock button.)

(If shock button is pressed, then the voice will prompt:

Shock delivered --Stop2S--

Begin CPR.

--Stop 2MIN--

Analyzing heart rhythm --Stop2S--

Do not touch the patient --Stop5S--

Analyzing heart rhythm --Stop2S--

No shock advised --Stop2S--

Begin CPR.

--Stop 2MIN--

(Circulation)

(If shock button not pressed, the voice prompts: --Stop6S--

Deliver shock now, press the orange button --Stop6S--

Deliver shock now, press the orange button --Stop6S--

Shock button not pressed. --Stop2S--

Begin CPR.

--Stop 2MIN--

(Then the scenario restarts)

(But

Analyzing heart rhythm --Stop2S--

Do not touch the patient --Stop5S--

Press pads firmly to patient's bare chest --Stop10S--

Won't play)

Scenario 9:

Analyzing heart rhythm --Stop2S--

Do not touch the patient --Stop5S--

Shock advised --Stop2S--

Charging --Stop2S--

Stay clear of patient --Stop2S--

Deliver shock now, press the orange button

(The shock light flashes, the speaker has an alarm sound and press shock button.)

(If shock button is pressed, then the voice will prompt:

Shock delivered --Stop2S--

Begin CPR.

--Stop 2MIN--

(Then the scenario restarts).

(If shock button not pressed, the voice prompts: --Stop6S--

Deliver shock now, press the orange button --Stop6S--

Deliver shock now, press the orange button --Stop6S--

Shock button not pressed. --Stop2S--

Begin CPR.

--Stop 2MIN--

(Then the scenario restarts).

Scenario 10:

Analyzing heart rhythm --Stop2S--

Do not touch the patient --Stop2S--

Analyzing interrupted --Stop2S--

Do not touch the patient --Stop 12S--

Shock advised --Stop2S--

Charging --Stop2S--

Stay clear of patient --Stop2S--

Deliver shock now, press the orange button

(The shock light flashes, the speaker has an alarm sound and press shock button.)

(If shock button is pressed, then the voice will prompt:

Shock delivered --Stop2S--

Begin CPR.

--Stop 25S--

Low battery

--Stop 120S--

Analyzing heart rhythm --Stop2S--

Do not touch the patient --Stop5S--

Analyzing heart rhythm --Stop2S--

No shock advised --Stop2S--

Begin CPR.

--Stop 2MIN--

(Circulation)

(If shock button not pressed, the voice prompts: Stop6S

Deliver shock now, press the orange button --Stop6S-

Deliver shock now, press the orange button --Stop6S--

Shock button not pressed. --Stop2S--

Begin CPR.

--Stop 2MIN--

(Then the scenario restarts:

(But --Stop2S-- Analyzing interrupted

--Stop2S-- Do not touch the patient. Won't play)

the direct sequence is

Analyzing heart rhythm --Stop2S--

Do not touch the patient --Stop5S--

Shock advised.....